

*news*

---

eme

Wire Drawing Machines & Maintenance

Via Prà Trebbia, 4  
23862 Civate - LC

+39 031 658050  
[info@emesrl.com](mailto:info@emesrl.com)

# NEWS for FASTENERS <math>\lt; \varnothing 16</math>

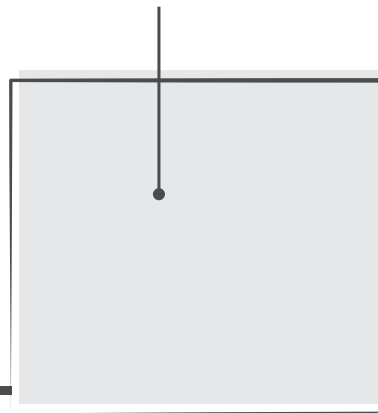
## semi-automatic system

from decoiling to forming:  
a solution for wire introduction

---

- For wires under diameter 16 mm
- It guarantees safety for operators

Forming  
machine



Clamp integrated  
in the capstan  
without chain

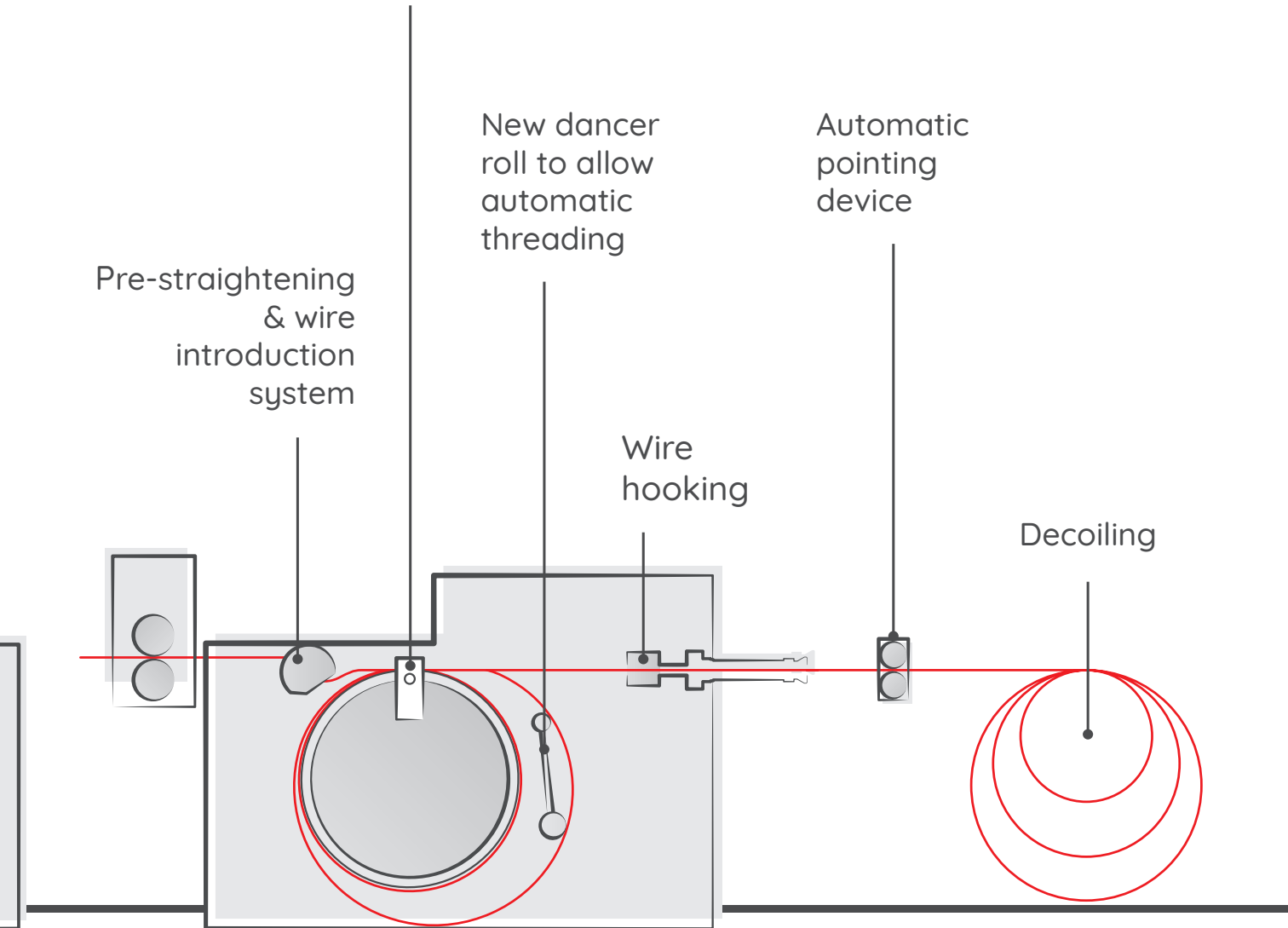
New dancer  
roll to allow  
automatic  
threading

Automatic  
pointing  
device

Pre-straightening  
& wire  
introduction  
system

Wire  
hooking

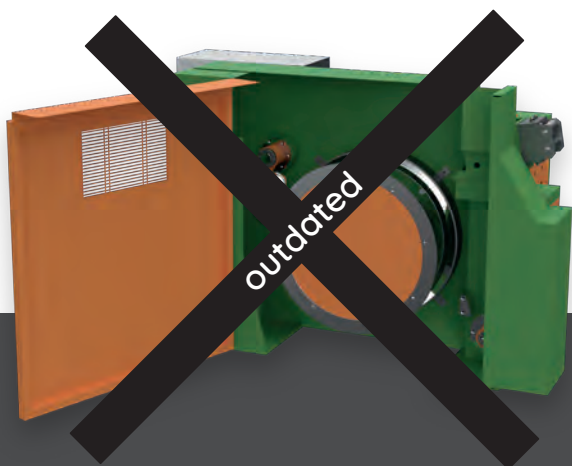
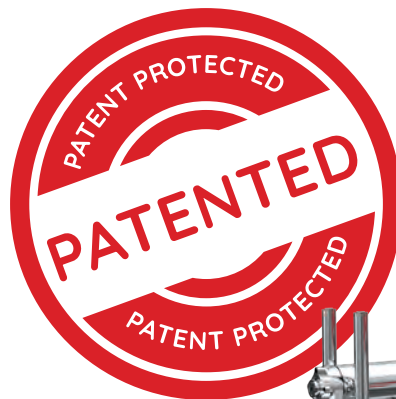
Decoiling



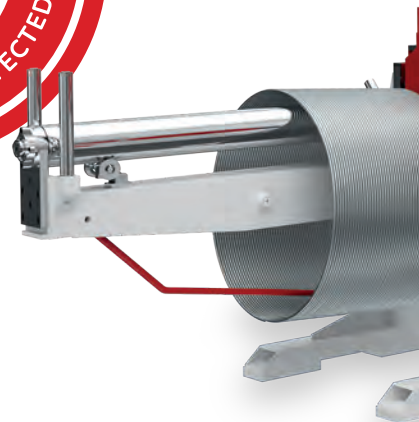
# NEWS for FASTENERS >Ø16

step by step  
drawing machine

---



The machine will replace  
in line drawing machines  
over 16 mm diameter.



line composition

- Decoiler
- Pre-straightening device
- Integrated wire pointing machine
- Step by step drawing machine
- Automatic wire feeder

Linear drawing  
with forming  
machine feeding

Wire pointing  
performed  
automatically

Transition from  
continuous to  
alternating motion



- Integrated pointing unit
- Automatic interlocking of cold forming machines
- No limit on number of pieces & length to form

*news*

eme

Wire Drawing Machines & Maintenance



[emesrl.com](http://emesrl.com)